

COMPACT TRACK LOADER

TL11R3

takeuchiTM

From World First to World Leader



Operating Weight: 5,435 kg

TOUGH, POWERFUL, RELIABLE



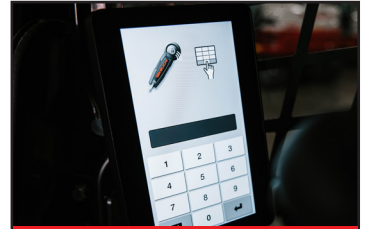
EH Joystick Controls



8" Color Touch Screen



Multi-Switch Control Panel



Takeuchi Access Management

The TL11R3 Compact Track Loader has an operating weight of 5,435 kg and a 78.8 kW engine, making it a versatile and well-balanced machine that excels in a wide range of applications. Its radial lift arm design is engineered to deliver superior breakout forces, making the TL11R3 particularly well-suited for grading and dirt work.

The TL11R3's operator station features an intuitive 8-inch touchscreen multi-information display that integrates Bluetooth radio and air conditioning controls within the screen. It also includes a standard rear-view camera, electric-over-hydraulic (EH) joystick controls, an adjustable suspension seat, and a large cup holder — all designed to keep operators informed, comfortable, and less fatigued. EH controls ensure smooth operation for both travel and loader functions while enabling a range of new features that optimize productivity. Additionally, a heavy-duty rear door and a tilt-up cab provide exceptional access to the TL11R3's engine and routine inspection points.



Operator's compartment is spacious and provides unequalled comfort and visibility.

Product Features & Specifications

ENGINE

- EU Stage V / EPA Tier 4 Emission Compliant
- Turbocharged
- DOC+DPF+SCR Exhaust After Treatment
- Automatic Fuel Bleed System
- Active Power Control
- Working Modes - Standard and ECO Mode
- Double Element Air Cleaner
- Foot Throttle Pedal (Accel./Decel.)
- High Capacity Radiator and Hydraulic Oil Cooler Mounted Side-by-Side on Swing Out Frame
- Idle Up in Cold Weather

ELECTRICAL

- 8" Color Touch Screen Display
- Rear View Camera
- Multi-Switch Control Panel & Jog Dial Control
- 12 Volt System with 80 amp Alternator
- LED Work Lights: Two Front and Two Rear
- Attachment / Travel Operation Sensitivity Adjustment
- Takeuchi Access Management System (Engine Push Start)
- Takeuchi Fleet Management - Telematics System*
- 270 Degree View Camera (optional)

UNDERCARRIAGE AND FRAME

- Permanently Sealed Track Rollers with Metal Face Seals
- High Torque Planetary Final Drive
- Fully Welded Frame with Integrated Cross Members
- 450 mm Rubber Crawlers
- Grease Type Track Adjuster
- Front and Rear Tie-Down Points
- Rear Bumper Integrated into Frame
- Creep Mode and Two-Speed Travel with Automatic Shift
- Steering Drift Adjustment
- Slip Detection

OPERATOR'S STATION

- Tilt-up Operator's Station
- Deluxe High Back Suspension Seat
- ROPS / FOPS Level I Structure
- Retractable 2" Seat Belt
- Pressurized Cab with Roll-up Door, A/C, Heat, Defrost and Front Wiper, and DAB Radio with Bluetooth Hands-Free Function (Cab Only)
- Polycarbonate Front Door (Cab Optional)*
- 3 Point Retractable Seat Belt (optional)
- Air Suspension Seat (optional)
- FOPS Level II Roof Guard Kit (optional)

HYDRAULIC & WORKING EQUIPMENT

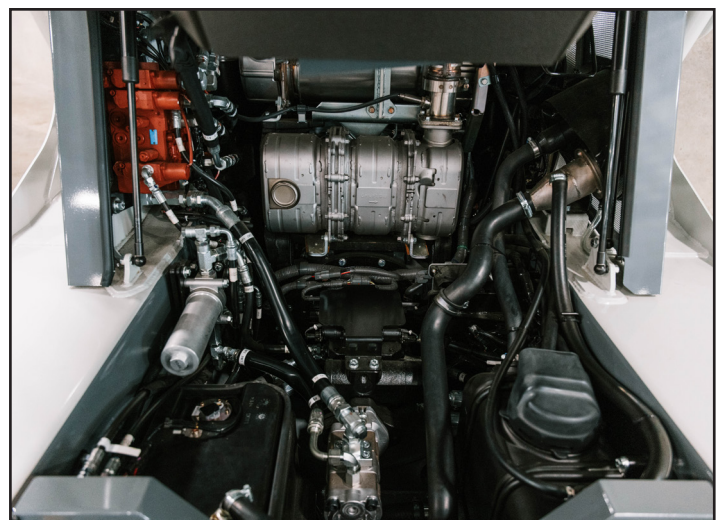
- Radial Lift Design
- Electric-Over-Hydraulic Joystick Controls
- Arm Float
- Cushioned Arm Cylinders
- Self Level (Up Only)
- Proportional Auxiliary Hydraulic Controls with Detent
- Pressure Relieving Flat Faced Coupler Body
- Lever Pattern Change via Touch Screen Display (ISO-H)
- Mechanical Quick Hitch
- Manual Parking Brake
- 14-Pin Connector with Detent Mode (optional)
- Hydraulic Quick Hitch (optional)
- High Flow Auxiliary Hydraulics 153.0 L/min (optional)
- Auto Ride Control (optional)
- Electric Performance Package: Return-to-Set-Position, Arm Height Limit and Self Level (UP&DOWN) (optional)

TAKEUCHI FLEET MANAGEMENT

- Minimize Downtime
- Remote Diagnostics
- Utilization Tracking
- Proactive Maintenance
- Control Costs



Swing-Out Cooling Module for Easy Cleaning



Tilt-Up Cab for Excellent Service Access

*Functions may not be available in all countries, so please consult your Takeuchi dealer for details.

OPERATING PERFORMANCE

Operating Weight - Canopy	5,285 kg
Cab	5,435 kg
Tipping Load	3,550 kg
Rated Operating Capacity, (ISO 14397-1) @ 35%*	1,240 kg
Operating Load at 50% of Tipping Load	1,775 kg
Bucket Breakout Force	35.4 kN
Lift Arm Breakout Force	31.7 kN
Traction Force	58.7 kN
Ground Pressure - Canopy	32.5 kPa
Ground Pressure - Cab	33.4 kPa
Travel speed -	
Low	7.8 km/h
High	12.0 km/h
Creep Mode Speed	
Low Range	0.15 km/h
High Range	5.0 km/h

*Operating capacity of track loaders is rated according to ISO 14397-1 at no more than 35% of the tipping load.

HYDRAULIC SYSTEM

Auxiliary Flow - Primary Circuit	88.0 L/min
Auxiliary Flow - High Flow (optional)	153.0 L/min
Hydraulic System Pressure	24.0 MPa



Creep Mode

ENGINE

Make / Model	Kubota / V3800-TIE5B
Engine Displacement	3,769 ml
Rated Output (ISO 14396)	78.8 kW / 2,400 min ⁻¹
Maximum Torque	362.6 Nm / 1,500 min ⁻¹

FLUID CAPACITIES

Engine Lubrication	13.2 L
Cooling System	16.0 L
Fuel Tank Capacity	126.5 L
Hydraulic Reservoir Capacity	40.6 L
Hydraulic System Capacity	84.0 L

SAFETY AND HEALTH

Vibration Levels	
Hand / Arm	≤ 2.5 m/s ²
Body	≤ 0.5 m/s ²
Noise Level	
Sound Power Level	LWA 102 dB



270 Degree View Camera (Optional)

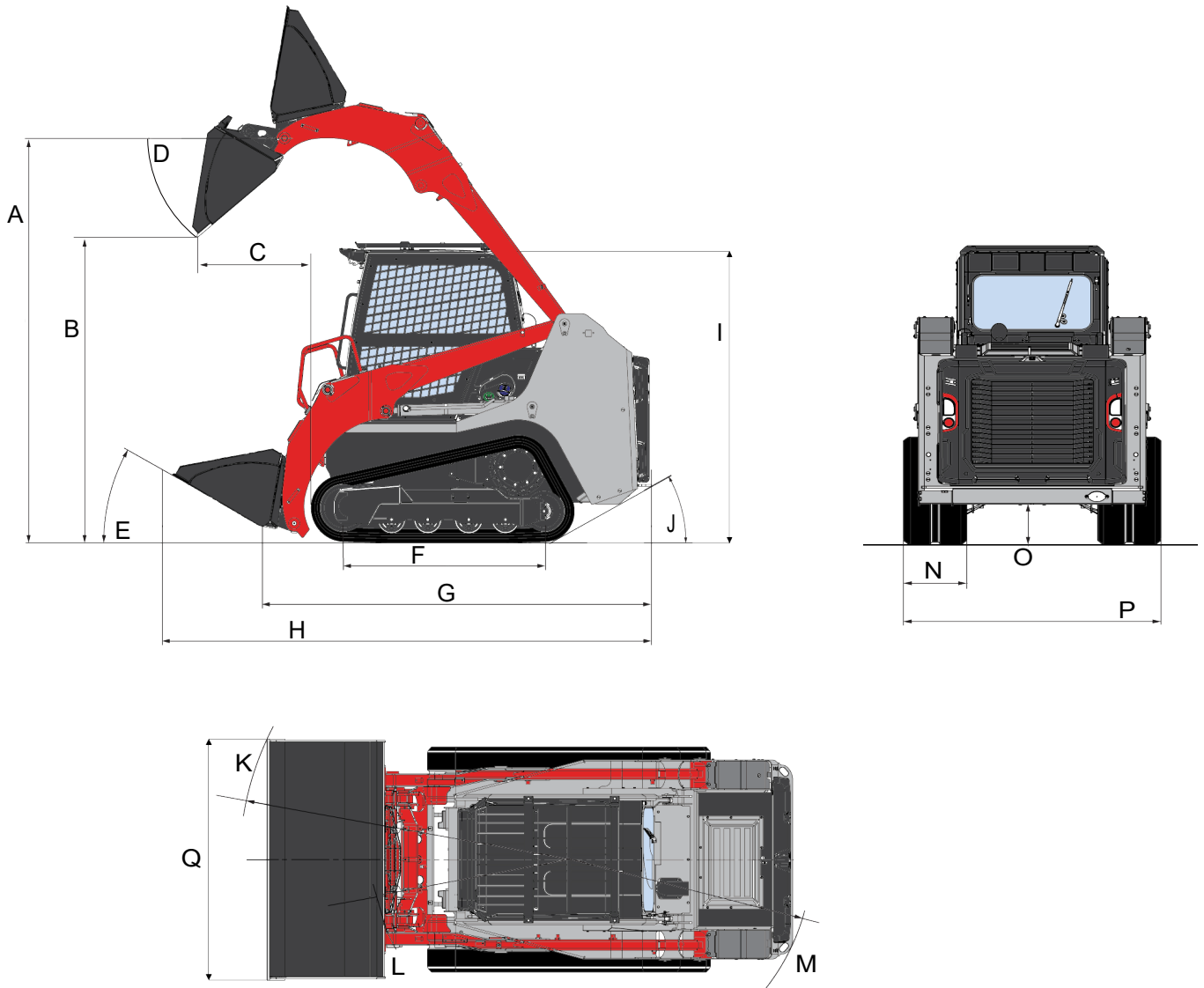


Electric Performance Package



TFM

TL11R3 Compact Track Loader



MACHINE DIMENSIONS

A	Maximum Lift Height to Bucket Pin	3,200 mm
B	Dump Height Fully Raised	2,420 mm
C	Dump Reach Fully Raised	895 mm
D	Dump Angle	40°
E	Rollback Angle	30°
F	Track Base	1,595 mm
G	Machine Length	3,030 mm
H	Transport Length	3,875 mm
I	Transport Height	2,330 mm
I'	Transport Height with Roof Guard	2,380 mm
J	Departure Angle	29°
K	Clearance Circle with Bucket	2,460 mm
L	Clearance Circle without Bucket	1,490 mm
M	Clearance Circle Rear	1,785 mm
N	Track Shoe Width	450 mm
O	Ground Clearance	315 mm
P	Overall Width without Bucket	1,830 mm
Q	Bucket Width	1,960 mm



© 2026 Takeuchi MFG. Co., Ltd. All Rights Reserved. In accordance with our established policy of continued improvement, specifications and features are subject to change without notice. Pictures may show options other than standard equipment.

FORM: TL11R3 Compact Track Loader Spec Sheet - July 2026

TAKEUCHI[™]
From World First to World Leader